

LUUN®

L u x u r y u n i f o r m s



CONTENT

01	<u>About us</u>	5
02	<u>WOMAN</u>	7
03	<u>Luxury collection</u>	9
	<u>Long lab coats</u>	11
	<u>Short lab coats</u>	21
	<u>Tunics</u>	35
	<u>Trousers</u>	47
	<u>Skirts</u>	59

Simple flexy collection 67 **04**

Long lab coats 69

Short lab coats 78

Tunics 89

Trousers 99

Skirts 109

MEN 115 **05**

Long lab coats 117

Short lab coats 123

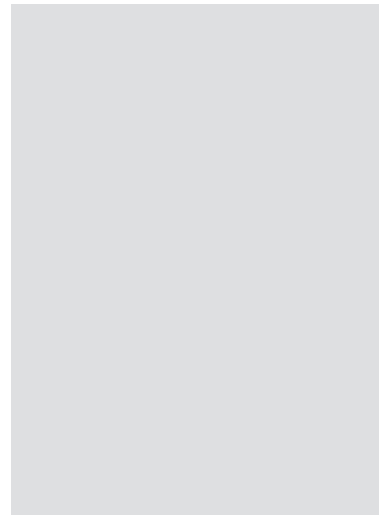
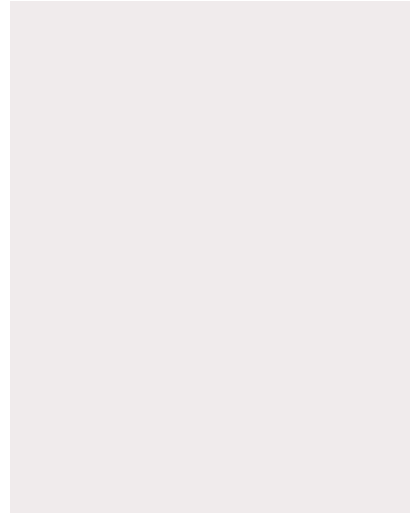
Tunics 135

Trousers 165

Colors & sizes 174 **06**

Embroidery 176





About us —

At LUUN, we are creating fashionable medical scrubs and apparel designed to make you feel great. Everything started a long time ago with the question: *Can medicine clothes be fashionable? Yes, they can!* Our experienced, knowledgeable and passionate team works hard to find answers for you. We have come a long way, just to create mesmerizing luxury medical uniforms. Our aim is to add exclusiveness to your daily working routine. For us, luxury means functionality, quality, sophistication, elegance and simplicity. We

are convinced that first impressions are crucial for your profession. Clothes that you wear can affect your performance and influence relationships with other people. What you wear reflects your company's goals and vision too. The biggest inspiration is our satisfied customers from all over the world, that are constantly giving us the power to explore, grow and evolve. We mastered our precision to make you feel unique.

*We mastered our precision
to make you feel unique.*

Concept flexy

Concept flexy is made from the blended premium finest cotton and elastane fibers. The blend is made of 97% cotton and 3% elastane, so this scrubs clothing is very easy to maintain. Cotton fibers are durable, breathable, and soft, elastane is well known for its exceptional elasticity-improving your work performances.



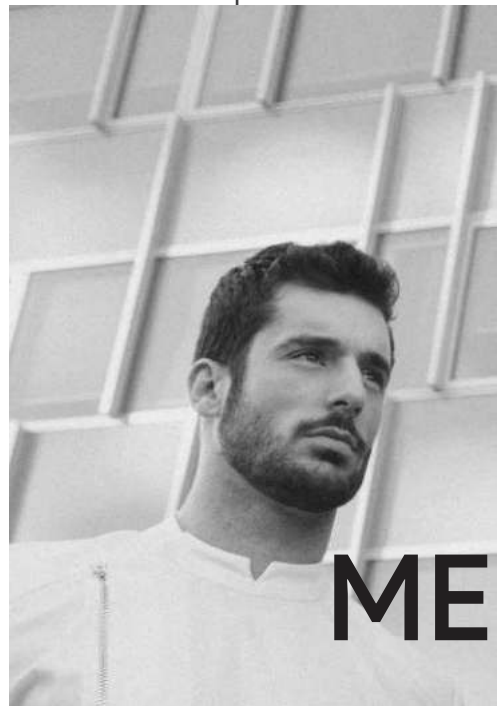
Cotton vita

As one of the most breathable fibers, cotton offers the best options in professional attire. Our Cotton vita fabric is 52% cotton, 45% polyester, 3% elastane- perfect blended fibers for breathable, comfortable, and quality, lightweight textile.

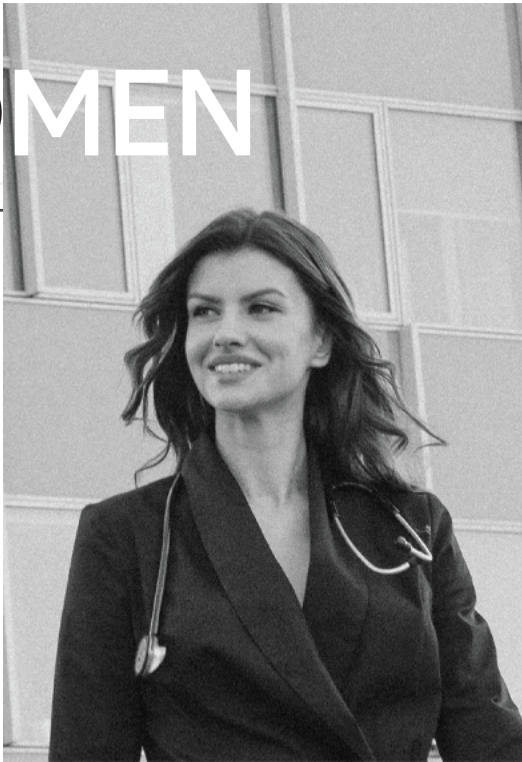


#LUXURY COLLECTION

By combining our tunics, trousers, lab coats long and short, every man can make his professional wardrobe interesting and fashionable. Men's medical Luxury Collection scrubs collection is *different, stylish, brave and fashionable.*



WOMEN



#LUXURY COLLECTION

Luxury Collection scrubs clothing is our premium collection of medical apparel. It brings style and fashion to the world of medical apparel. Made from premium quality Italian textiles, *Luun scrubs clothing makes you feel perfect.*

#SIMPLE FLEXY COLLECTION

Simple Flexy Collection scrubs clothing brings comfort and convenience in one. It includes a variety of tunics, lab coats and skirt styles, from casual to elegant. *We believe that first impressions are crucial for your profession.*



WOMEN



wearluun.com





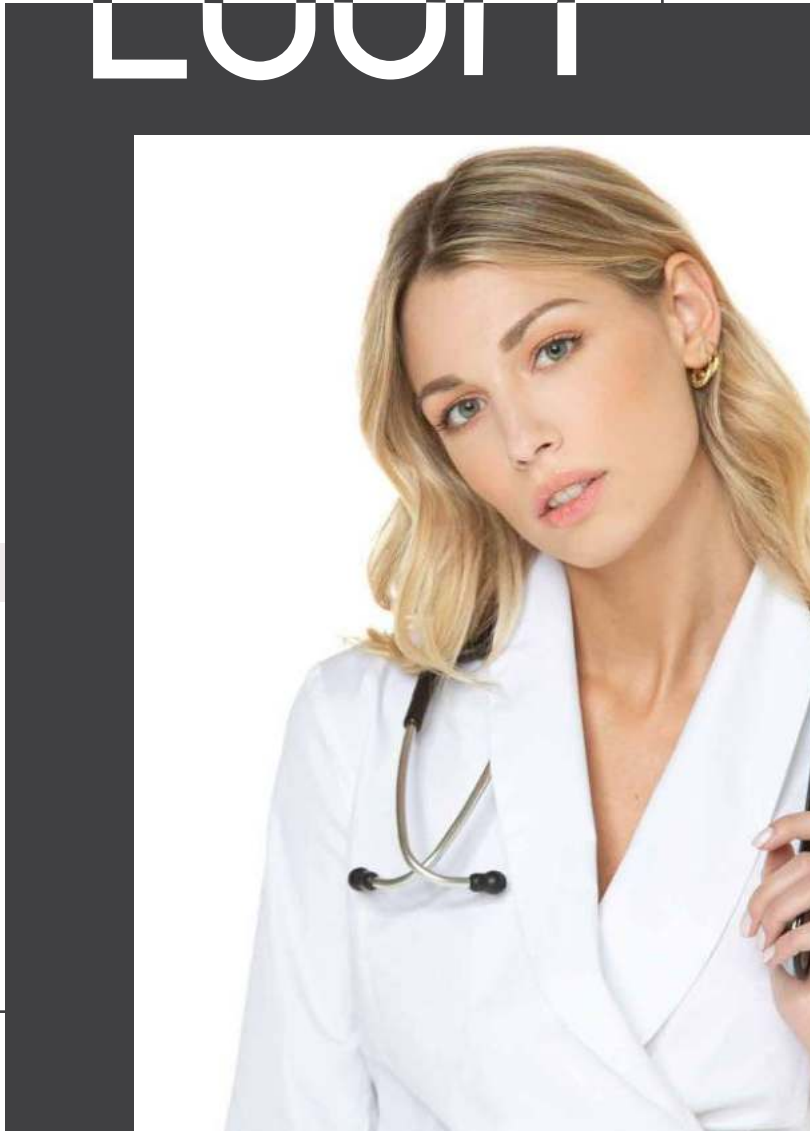
WOMEN

LUXURY COLLECTION

Luxury Collection scrubs clothing is our premium collection of medical apparel. It brings style and fashion to the world of medical apparel. Made from premium quality Italian textiles, Luun scrubs clothing makes you feel perfect. Medical scrubs clothing must be comfortable for all-day wearing, so we have used only premium Italian textiles that will make you feel relaxed and comfortable during the whole shift.

With love. LUUN®

LUN®



www.wearluun.com



Long lab coats



#Jelly

Jelly



Jelly is a double-breasted lab coat with a zipper at the front part and roll collar. The front bottom hem is slightly longer than the back part. It's a $\frac{3}{4}$ sleeves coat with foldable, notched cuffs.



LUUN®

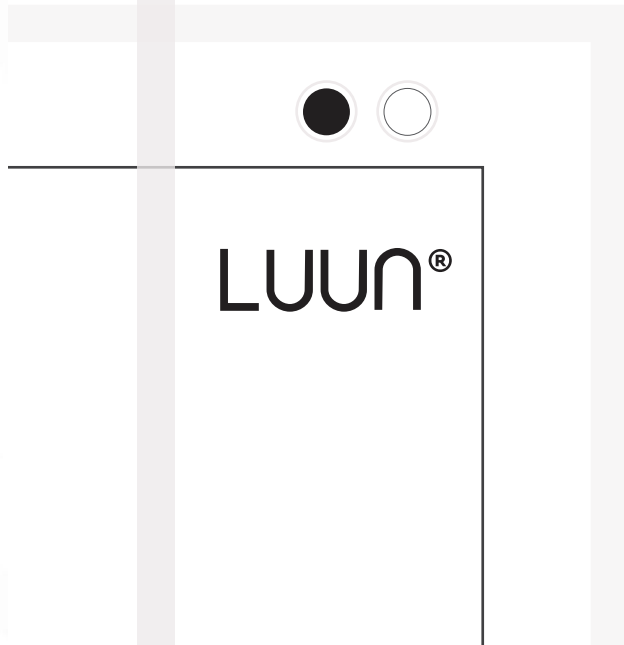


#Shall



Shall lab coat is made without buttoning with standing roll collar. Zippers are positioned on the pockets and length of the sleeves. The front and the back part is made with a double shoulder yoke. Frontside and backside are with curved hems.

Shall



LUUN®



#Blansha

Blansha is a comfortable knee-length lab coat with $\frac{3}{4}$ sleeves. Standing roll collar with the copper buttons gives a unique appearance to this lab coat.

Blansha





BEST SELLER



Diamond sense



A low-cut neckline and waisted shape create a slimming effect. **Diamond sense** is close fitting lab coat with a long zipper at the front part. Folded back part makes this coat easy to wear.



LUUN®

LUUN®



Short lab coats



www.wearluun.com

LUUN®



BEST SELLER

LUUN®

#Misha

Misha is a double-breasted lab coat with $\frac{3}{4}$ sleeves and a zipper on the front side of the coat. Sharper longer front bottom hem with front and back princess seams gives you a special look.



Misha

#Haute



LUUN®



SHORT LAB COAT



Haute



Haute is short lab coat with standing roll collar. On the front side it features diagonally positioned zipper and long sleeves.

#Diamond



Diamond

SHORT LAB COAT



LUUN®

Pleasant to wear, *Diamond* short lab coat is double-breasted features a diagonal positioned zipper at the front part and a hidden button. Shaped coat with low-cut neckline features a standing collar.



#Shall short



Shall short

Shall short coat is made with a double shoulder yoke and no buttons. The back part length is slightly longer than the front part. Zippers are positioned on the pockets and at the cuffs of $\frac{3}{4}$ -length sleeves.

SHORT LAB COAT



LUNN®



LUUN®



LUUN®

#Bianca

Bianca is a slim-fit short lab coat with long sleeves. It has a standing roll collar, two pockets, and three hidden buttons for closing.



SHORT LAB COAT



Bianca

#Couture



Couture is $\frac{3}{4}$ sleeves lab coat designed to fit perfectly on your body. This short lab coat features a diagonal positioned zipper on the front side. The right and left front sides are deeply notched what gives a special style to this coat. At the bottom, sleeve hem cuffs are notched.



SHORT LAB COAT



Couture

We mastered our
precision to make
you feel unique.

LUUN®

LUUN®

Tunics



www.wearluun.com

#Harmony





Harmony is a tunic with a low neckline and $\frac{3}{4}$ sleeves with two darts at the front side. Folded and textured back part makes this tunic comfortable and easy to put on. Folded parts are tightened with the three buttons at the backside. A sweetheart neckline is a distinctive heart-shaped style that accentuates décolletage.



LUNN®



Harmony

#Unique



LUUN®



TUNIC



Unique tunic is a regular fit tunic with a zipper pocket on the front side. It features $\frac{3}{4}$ sleeves and a collarless neckline. The bottom frontside hem is sharper with the corner and the backside is slightly curved.



Unique

#Jazz

BEST SELLER



LUUN®

Jazz is a tunic with an asymmetrical front zipper and two-seam pockets. Tunic features two side inseam zippers what is making this tunic easy to put on and off.



Jazz

TUNIC

#Amy

BEST SELLER



LUUN®

Amy tunic features a diagonal positioned zipper at the front part, a standing collar, and short sleeves. At the back part, it is slightly shaped what makes this coat comfortable and pleasant to wear.

Amy

LUNN®

#Zoe





Zoe is a tunic with two side inseam pockets and double-breasted left side button closure. Cuffs are notched. The curved bottom hem is slightly shorter than the backside.



Zoe





LUUN®

Trousers

www.wearluun.com





#Gita

LUUN®

Gita straight pants features carefully gathered ruffles on front hip pockets, with a wide waistband.



Gita



TROUSERS



#Pearl zipp



LUUN®

LUUN®

Pearl zipp



Pearl zipp high waist pants feature darts, decorative zippers, and fly front zipper with comfortable, breathable textile. Pants are slightly opening at the length of pant-leg.



TROUSERS



#Tailor



Taylor full-length pants feature a zipper at the front part. Those pants shape your legs perfectly. High-waisted pants are one of our skinny-fit variety of models.

LUUN®

Taylor





BEST SELLER

#Store



● ○
Store

High-waisted **Store** pants with the elastic waistband for flexible fit feature two functional front pockets. The zipper is positioned on the front part of the full-length pants.

#Mina



BEST SELLER



Mina is a one-piece jumpsuit with a waistband and double-breasted zipper. The jumpsuit has one patched pocket on the left side.

LUUN®

Mina



LUUN®

Skirts



www.wearluun.com



#Yvette dia



LUUN®



Yvette dia

Yvette dia is a pencil skirt that features a diagonal positioned zipper on the front side. It's a knee-length skirt with two darts at the back part. This model of the skirt is narrowed down.



#Yvette



LUUN®



Yvette

Yvette knee-length skirt is made with two darts positioned at the front part. A Zip-up skirt is designed to shape your body. Yvette is comfortable and easy to wear.



#Story

Story is fastened with a metal zipper at the front part. Waisted and gathered with the elastic waistband. The kick pleat is positioned at the front part of the skirt.



Story



Elegance

/ˈɛlɪɡ(ə)nəs/

The beauty of an idea characterized by minimalism and intuitiveness while preserving exactness and precision.

WOMEN

SIMPLE FLEXY COLLECTION



Simple flexy collection is comfortable and convenient in one. This adorable collection includes a variety of styles, from casual to elegant uniforms. Luun provides the perfect combination for your working attire, it brings comfort and convenience in one. It includes a variety of tunic, lab coats, and skirt styles, from casual to elegant.

With love. LUUN®

LUUN®

#SIMPLE FLEXY COLLECTION

www.wearluun.com



Long lab coats



#Marie

LUUN®



Marie

Marie is uniquely designed long lab coat with a banded collar and two sides angled pockets. This long lab coat features a patch pocket and elastic waistband.



#Lu

LUUN®



Lu

LONG LAB COAT



Lu is long lab coat features one button and 5 hidden buttons at the breasting front side. It is an elegant lab coat with a special neckline and collar.



#Nun



Nun is a lab coat with a roll collar and two side cargo pockets featuring a zipper at the front part. The kick pleat is positioned at the front part of the coat.



LUUN®

Nun



#Insta long

LUUN®



Insta long

Insta long is a long lab coat with a standing collar and $\frac{3}{4}$ sleeves with foldable cuffs. It features a princess pattern, zipper with notched bottom hem, and inverted box pleat at the backside.



LONG LAB COAT

Short lab coats

www.wearluun.com





#Insta

Insta

Insta short lab coat features two inseam pockets on the side seams. This short lab coat is shaped to fit perfectly on your body. At the lower edge of the sleeve cuffs are made to be foldable.

SHORT LAB COAT



LUUN®



#Illa

LUNN®



Illa is a double-breasted short lab coat with two full-length zippers on the frontside. Cuffs are notched at the bottom hem of the sleeve. Illa is ¾ sleeves lab coat.



Illa

LUUN®



#Maxx

LUUN®

LUUN®

Maxx is a short slim-fit lab coat with $\frac{3}{4}$ sleeves, notched at the bottom hem. Banded collar and princess seams make this coat attractive. At the bottom frontside, there are two zipper pockets.



Maxx

#Shall max

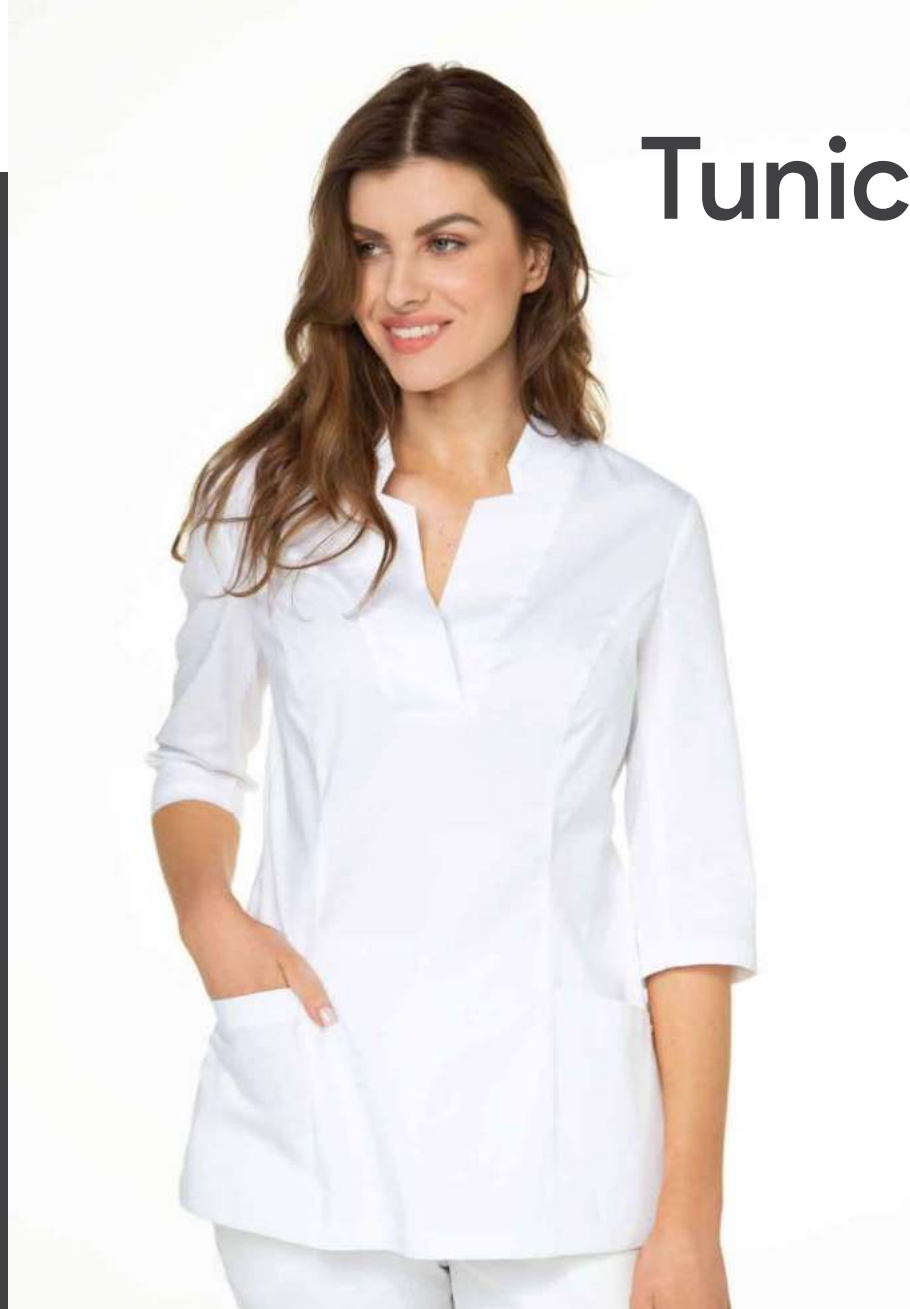


LUUN®

Shall max is A-line short woman lab coat with roll collar. It features long sleeves, two inseam pockets on the front side, and three buttons for closing. On the upper part of the coat, the princess pattern gives this coat a slim-fit appearance.

*Shall max*

Tunics



www.wearluun.com



#Core

LUUN®



Core is an A-line tunic with cuffs at the lower part of quarter sleeves. Fierra features a collarless round neckline and front zipper for easier dressing up.

*Core*



#Nala

LUUN®

Nala is an elegant tunic with $\frac{3}{4}$ sleeves and two patched pockets. It is gathered in a waistline with an elastic band. Nala features a V-shape neckline.

*Nala*



#Inna

LUUN®

Tunic Inna is regular fit tunic with 3/4 sleeves and ruffled V-neckline. It is comfortable and easy to wear.



Inna



#Silver





Silver is a woman A-line tunic with V-shape neckline and flat piped collar and ¾ sleeves. It features zipper on the backside and princess seam pattern.



Silver

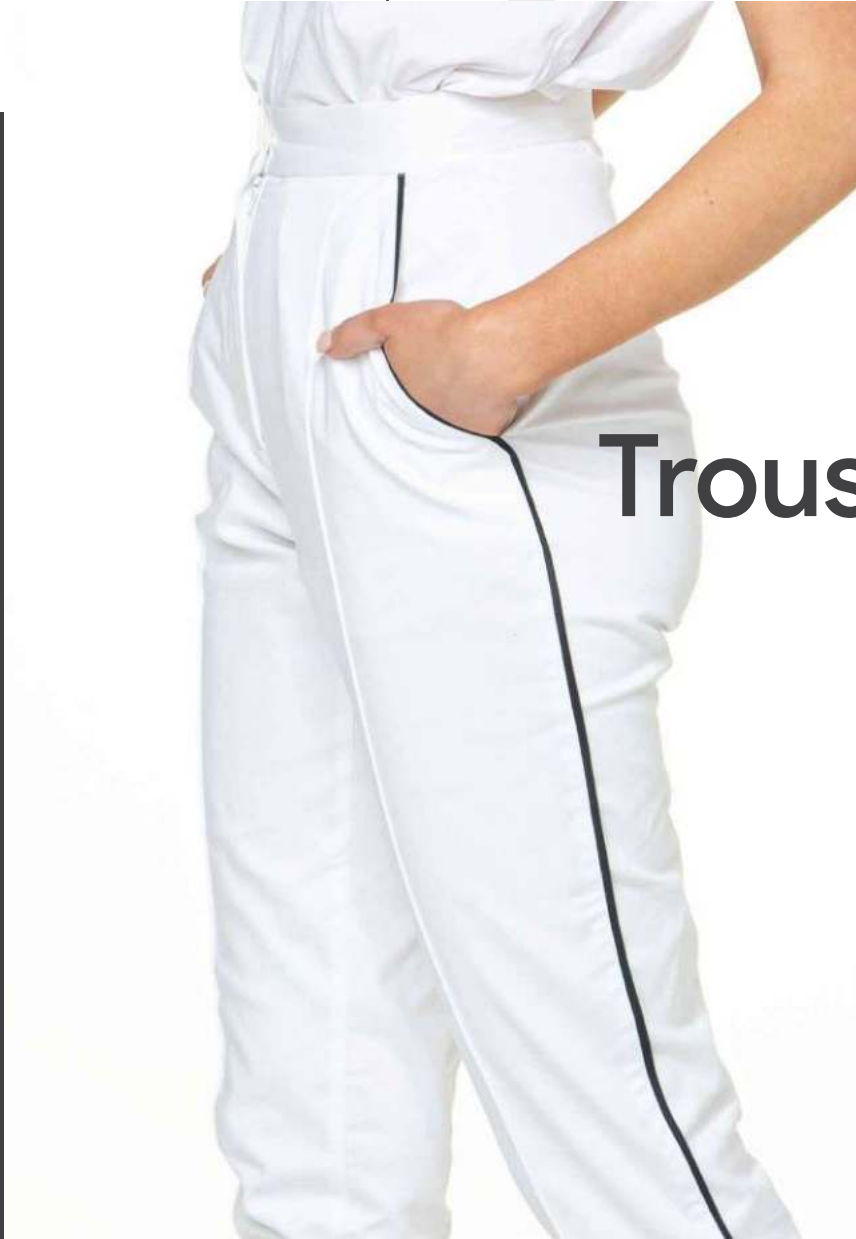
LUUN®

LUUN®



LUUN®

www.wearluun.com



Trousers



#Utha



Utha pants are slim-fit pants with two side pockets and a fly-front zip with a button. On the backside of the pants there is elastic waistband and two zippers at bottom hem.



LUUN®

Utha



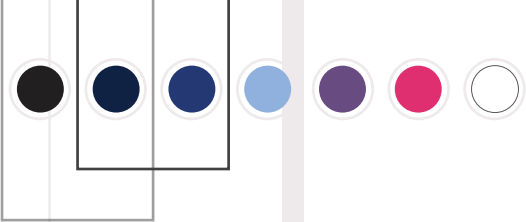
#Pearl

LUUN®

Pearl trousers are slim-fit pants with darts at the front and back parts. Angled slant pockets and shapes make them functional and easy to fit. Pants feature a middle line at the back and front parts.



Pearl



#Ulla





Ulla pants are high-waisted slim-fit pants that feature zippers with button-breasted openings.

LUUN®



Ulla



#Art

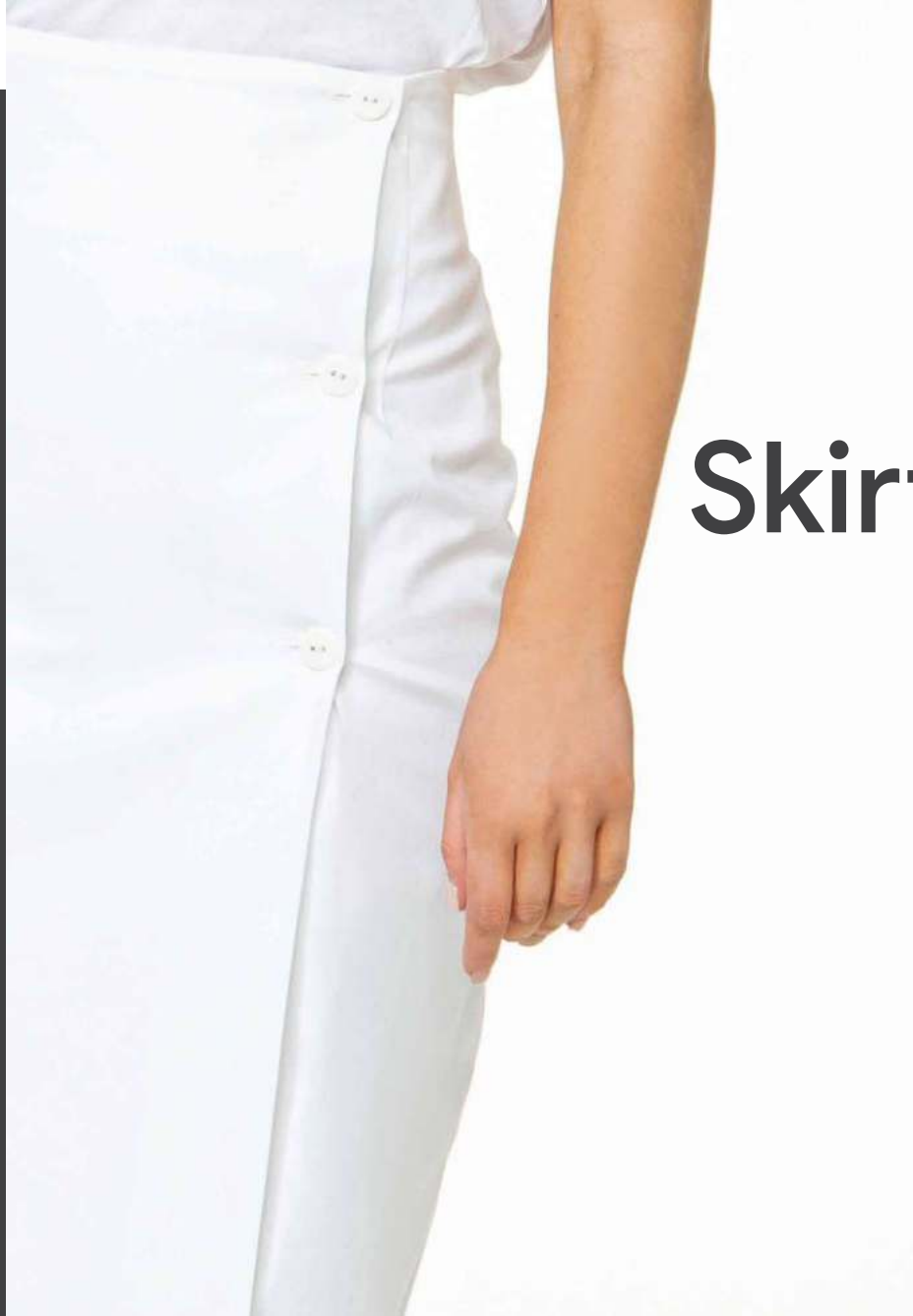
High-waisted **Art** pants with the elastic waistband for flexible fit feature two functional front pockets. The zipper is positioned on the front part of the full-length pants.



Art

LUN[®]

www.wearluun.com



Skirts

LUUN®



#Tilly

Tilly

Tilly is a double-breasted high waist pencil skirt with 4 buttons on the front side. The right part of the front side is longer than the left side.



LUUN®





#Ria

LUUN®

Ria



Ria pencil skirt is a slim-fitting skirt with a narrow cut. This knee-length skirt features pocket, center back kick-pleat, and fitted waistband.



MEN

LUXURY COLLECTION

Check out our last men collection! It is made from Italian high quality fabrics. Those unbelievable comfortable uniforms are function and style in one. Make a step further from the classical white tunic and choose elegant black for a premium touch. Stand out from the crowd with premium zippers, both functional and decorative on your medical scrubs top.

LUUN®

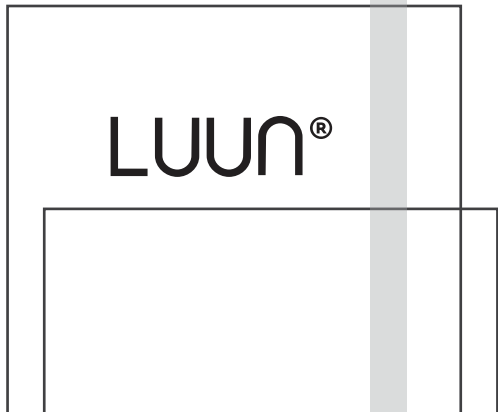
#Suit

BEST SELLER

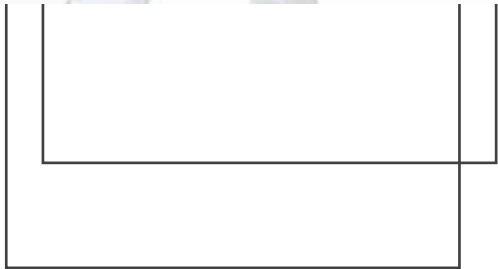




Suit is a long lab coat with a standing collar and three patched pockets. It features long sleeves and it is a regular fit coat.



LONG LAB COAT



Suit

#Zipp



BEST SELLER

Lab coat **Zipp** features a standing collar with a zipper on the front side, 3 slash pockets, long sleeves, and front middle positioned zipper.

LUUN®



Zipp

Short lab coats



www.wearluun.com

LUUN®



#Four

LUUN®

Four is short sleeves tunic with a band collar and notched cuffs. It has a zipper on the left side of the tunic and an angled yoke on both shoulders.



Four

#Four long



Four long

SHORT LAB COAT



Four long is long sleeves tunic with band collar and notched cuffs. It has a zipper on the left side of the tunic and an angled yoke on both shoulders.



LUUN®

#Collar



Collar is a man short lab coat with a standing collar and shoulder yoke. It is a buttoning coat with one angled welt pocket and two side slash pockets with long sleeves and cuffs.



Collar

LUUN®

SHORT LAB COAT

#Milly



Milly is a man short lab coat with standing collar, pocket on the right sleeve and long sleeves. On the frontside, there are two pockets what makes this coat functional and attractive in the same time.



Milly

LUUN®

SHORT LAB COAT



#Gayl

BEST SELLER



LUUN®

Gayl is a man short lab coat with front buttoning and long sleeves. It has two patched pockets on the left and right sides.



SHORT LAB COAT

Gayl

Tunics



www.wearluun.com

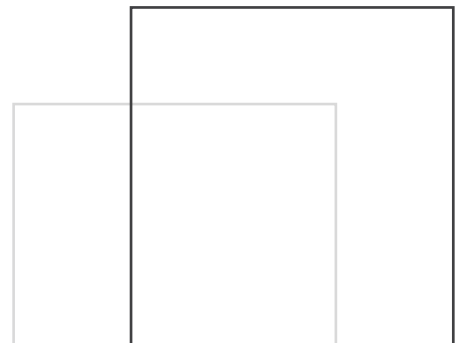
LUUN®



BEST SELLER

#Paggio

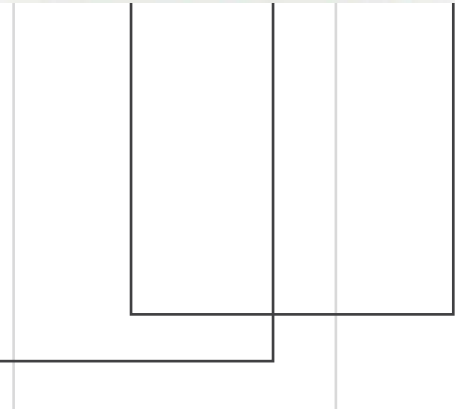
Paggio is a lab coat with a zipper on the right front side. This $\frac{3}{4}$ long lab coat has two pockets on the sides. Collarless round neck and notched bottom hem are significant for this lab coat.



TUNIC



Paggio  LUUN®



#Therapy



LUUN®

Therapy is a man tunic with a yoke and notched neckline. It features 2 patched pockets and one smaller pocket on the right side of the tunic.



Therapy



#Gio



LUUN®

Gio is a western yoked tunic with two side pockets and one chest pocket. It is a tunic with short sleeves, notched at the collarless neckline.

BEST SELLER*Gio*

#Apollo





LUUN®

TUNIC

Apollo is a short sleeve tunic with a collar band and notched neckline on the front side of the tunic. It features three patched pockets, two on the bottom side parts and one on the chest position.



Apollo



#Corell

LUNN®

TUNIC

Corel is a regular fit tunic with a half-length front side zipper and round neckline. On the backside of the tunic, there is the standing collar.



Corel





#Twitt

Twitt is a man tunic with a standing collar and two side pockets and one chest positioned pocket. It is short sleeves tunic with a slightly curved bottom hem.



Twitt

LUUN®



#Kai

Kai is a man tunic with short sleeves and a collar band. It features 5 button pins on the front side. Patterns are making this tunic unique.

LUUN®

*Kai*

#Cut



LUUN®

Cut is a short sleeve tunic with a flat piped collar connected to a zipper opening at the front side. The zipper is positioned at the princess seam line on the front side. It features an angled patch pocket.

*Cut*

#Livio



LUUN®

Livio

Livio is a tunic that features short sleeves, two zippers on the front side for easier putting on. Between two zippers, there is a pleated pattern that gives texture and appearance to this tunic. It is collarless tunic.

#Jalla

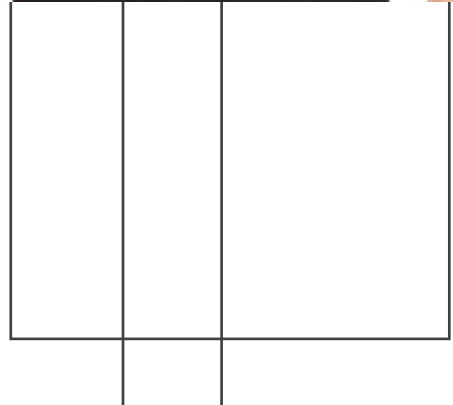


LUUN®

Jalla is a tunic with buttons on the left front side. It has long sleeves, a back band collar, and a round neckline on the front side.



Jalla





#Mondo

LUUN®

Mondo is short sleeves man tunic with front side half-lengths zipper and a hidden button on the right side. This tunic has one inseam pocket on the left side.



TUNIC

Mondo



#Ray



Ray is a tunic with western type yoke on the front side and straight type yoke on the backside. It has a collar band-notched on the neckline. Ray tunic is short sleeve tunic with two broad welt side pockets.



Ray

A person is shown from the back, wearing a black polo shirt with a grey stripe on the shoulder. The person's head is turned slightly to the right. The background is plain white.

LUUN®

#Uggo



Uggo is yoked tunic features short sleeves and band collar with flat piping on the left frontside and right backside. Two large frontside large patch pockets and one chest pocket makes this tunic high-functional.



Uggo



LUUN®



#Nevio

Nevio is a tunic with two zippers positioned on the shoulder seam-line. This tunic features two zipper pockets, short sleeves, and a round neckline.

LUUN®

*Nevio*

LUUN®

Trousers



www.wearluun.com



#Zen

BEST SELLER

LUUN®



Our **Zen** pegged pants are synonymous with comfort. Pants feature an elastic waistband with the band, gathered at the ankle and backside yoke.

Zen





BEST SELLER

LUUN®

Eco pants are man regular-fit pants with back elastic waistband and front fly zipper. Side seams are curved and eco pants features two pockets from each side and two slash pockets at backside. Side seams are slightly moved to the back part of the pants. Pants are gathered on the ankles.

Eco





LUUN®

BEST SELLER

Badge man pants are regular-fit pants gathered at the bottom leg hem. The pants feature two side pockets and two slash pockets on the backside. It has an elastic waistband with button breasted opening. Side seams are slightly moved to the front part of the pants.

Badge



#Rho

Rho are man pants with side round pockets and 2 buttons fly zipper. It features knee patches and one zipper pocket on the right front side.

Rho



LUUN®



COLORS





SIMPLE FLEXY

MEN & WOMEN



-  Black
-  Navy blue
-  Royal blue
-  Light blue
-  Purple
-  Fuchsia
-  White

LUXURY COLLECTION

MEN

-  Black
-  Navy blue
-  Gray
-  White

WOMEN

-  Black
-  White

LUNO®

SIZES

SIZE GUIDE FOR WOMEN

SIZE	36	38	40	42	44	46
BUST	86	90	94	98	102	106
WAIST	66	70	74	78	82	86
HIPS	94	98	102	106	110	114
















SIZE GUIDE FOR MEN

SIZE	48	50	52	54	56	58
BUST	94	98	102	106	110	114
WAIST	86	90	94	98	102	106
HIPS	100	104	108	112	116	120



ADD EMBROIDERY

Choose thread color

-  White
-  Yellow
-  Orange
-  Rose
-  Red
-  Magenta
-  Purple
-  Light blue
-  Dark blue
-  Green
-  Brown
-  Golden
-  Coper
-  Gray
-  Black

Choose font




Example Block new

Example Roman 3

Example Glow light

Example Washington

Choose position

-  Chest-left
-  Chest -right
-  Shoulder - right
-  Shoulder - left

WOMAN

Luxury collection

Long lab coats

Jelly	12
Shall	14
Blansha	16
Diamond sense	18

Short lab coats

Misha	22
Couture	24
Diamond	26
Shall short	28
Bianca	30
Haute	32

Tunics

Harmony	36
Unique	38
Jazz	40
Amy	42
Zoe	44

Trousers

Gita	48
Pearl zipp	50
Tailor	52
Store	54
Mina	56

Skirts

Yvette dia	60
Yvette	62
Story	64

Simple flexy collection

Long lab coats

Marie	70
Lu	72
Nun	74
Insta long	76

Short lab coats

Insta	80
Illa	82
Maxx	84
Shall max	86

Tunics

Core	90
Nala	92
Inna	94
Silver	96

Trousers

Utha	100
Pearl	102
Ulla	104
Art	106

Skirts

Tilly	
Ria	

MEN

Luxury collection

Long lab coats

Suit	118
Zipp	120

Short lab coats

Four	124
Four long	126
Collar	128
Milly	130
Gayl	132

Tunics

Paggio	136
Therapy	138
Gio	140
Apollo	142
Corel	144
Twitt	146
Kai	148
Cut	150
Livio	152
Jalla	154
Mondo	156
Ray	158
Uggo	160
Nevio	162

Trousers

Zen	166
Eco	168
Badge	170
Rho	172

Contact us



www.provar.si



info@provar.si